

STORM WINDOW Low-E • Exterior • Interior

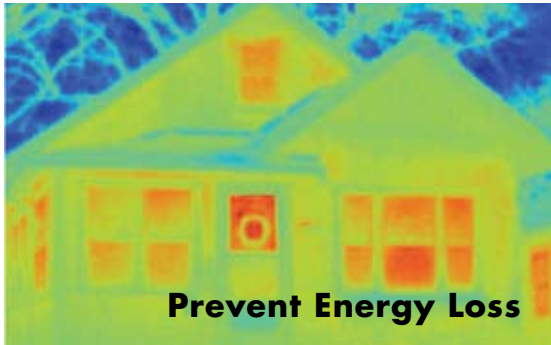


energy solutions
up to **60%** savings*





Energy Solutions for your windows



Energy Efficiency

Windows are a primary source of heat loss in a home because they are both a poor insulator and often a source of air infiltration. Adding storm windows over existing windows greatly reduces these breaches in energy efficiency, keeping your home warmer in the winter and cooler in the summer.

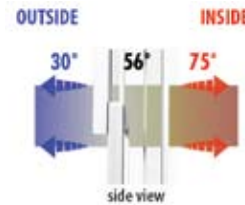
The Storm Window Thermal Break

Improved energy efficiency is just the beginning. Storm windows seal out drafts and significantly reduce outside noise. Once installed over your home's existing windows, storm windows protect your home with an extra layer of glass, creating a dead air space.

Unsurpassed Warranty

Any warranty is as good as the company standing behind it. All Larson Storm Windows not only come with a great Limited Lifetime warranty, they are backed by Larson Manufacturing, synonymous with quality since 1954.

Storm windows mount over your existing window either inside or outside your home, creating a thermal break between the window and storm window.



Adding storm windows to your home prevents heating and cooling loss year round.

Return on Investment

Storm windows are a cost-effective alternative to window replacement. They cost much less and you can do it yourself.

You could save \$26 per year, per window** for each storm window added to your home. For a home with 15 storm windows, that can mean an energy savings of \$390 per year! At that rate of return, the energy savings of a storm window will pay for itself in just 3.8 years compared to a payback time of over 30 years for double-pane thermal replacement windows.



** Source: Old House Journal, Oct. 2007. Dept of Energy: Energy Savings based on adding a storm window to a single-pane clear glass prime window calculated with average price of electricity from cities nationwide. Actual energy savings may vary.



new!



insider™ STORM WINDOWS

INTERIOR Energy Solutions for your windows



Cuts Energy Loss from the inside out

up to **50%** improvement instantly*

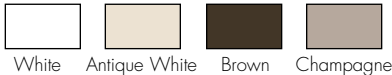
Mount Insider Storm Windows inside your home to block drafts, outside noise and increase energy efficiency.

The Insider Advantage

- Reduces drafts by up to 48%
- Significantly reduces outside noise
- Improves U-factor of your existing window by up to 50%

The Insider Benefits

- Easily installs in any room
bedrooms – living spaces – second story – historical homes
- Removes effortlessly for easy cleaning
- Custom made for a perfect fit
- Stays in place year round or removes easily
- Slim mounting rail blends into window jamb when not in use
- Maintains a clear view of outdoors



The Perfect Fit

- Give exact opening size (width x height) inside window jamb
- Measure opening width (top, center, bottom)
- Measure opening height (right, center, left)
- Order using the narrowest width and height

Installs in 3 Easy Steps

- Measure and mark top and sides
- Install top and side channels with screws
- Insert window

Mounts inside your home over most window types.



- Casement
- Picture

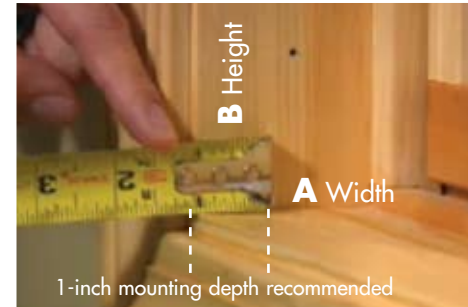


- Double Hung



- Slider
- Basement

Mounts inside window jamb; 1-inch depth is recommended for installation. Actual window depth equals 5/8". Maximum tolerance for out of square openings is 1/8"



Allow 3 weeks for delivery
Orders are custom and once placed cannot be cancelled

Insider Kit:

- Top mounting channel
- Side channels (2)
- Installation screws
- Thermal window panel



insider™ STORM WINDOWS



* Results based on independent lab testing when applied over wood double hung single glazed window.



EXTERIOR Energy Solutions for your windows

GOLD SERIES our best window

The LARSON Low-E Gold Series Storm Windows offer you exceptional features for ultimate performance on your home.

Our Gold Series Window

LowE glass standard	Improves energy efficiency up to 60%* year round
Double weatherstripping on both sides of sash	Provides maximum protection against air infiltration
Pocketed head, jamb and sill	An exceptionally tight fit; eliminates the need for stabilizer bar and bow guides
Interlocking top and bottom sash	Adds stability and prevents bowing
Butt-joint corners and tubular frame design	Reinforces joints and adds strength and durability
Operating window sash locks in place	Provides added security
Meets AAMA Certification Standards	Assures quality construction and performance

Available Models

- Two-Track Double Hung (full screen) L213E / L213
- Two-Track Double Hung L203E† / L203
- Two-Track Slider Window (full screen) L613E / L613
- Two-Track Slider Window L603E† / L603
- Two-Track Sliding/Picture Window L623E† / L623
- Storm Picture Window L503E† / L503

Color Selection

	White
	Almond
	Earth-tone Brown
	Sandstone

† Also available in Flush Mount

All models also available with standard clear glass



Gold Series storm windows feature energy-saving LowE Glass. You will feel more comfortable in your home and lower your energy usage. Also available in Clear Glass.

Gold Series Storm Windows are built to withstand winds **up to 95 mph** and cuts air infiltration by over four times the rate of our Silver Series.

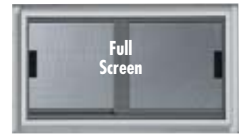
Styles to Fit Your Home



Two-Track Double Hung



Two-Track Double Hung



Two-Track Slider



Two-Track Slider



Picture Window



Two-Track Slider/Picture

Up to 60% better insulating value*

Warmer in the winter; cooler in the summer

Protects floors and furniture from harmful UV-rays



Excellent for three-season rooms.



EXTERIOR Energy Solutions for your windows

SILVER SERIES our better window

In the tradition of top performers, the Silver Series features a mechanical interlock at one of the most critical areas of the window ...where the sashes meet.

Silver Series Storm Windows are built to withstand winds **up to 80 mph** and cuts air infiltration by over two times the rate of Bronze Series.



Our Silver Series Window

Woolpile weatherstripping	Adds thermal barrier and protects against air infiltration
Riv cap miters	Provides added strength for the corners
Notched masterframe window	Sashes remove for easy cleaning
Centered stabilizer bar and interlocking windows	Adds strength and stability
Bow guides	Prevents bowing in severe winds
Meets AAMA Certificate Standards	Assures quality construction and performance

Available Models	Color Selection
<ul style="list-style-type: none"> Two-Track Double Hung L202 Two-Track Window L602 Storm Picture Window L502 	<div style="display: flex; align-items: center; margin-bottom: 5px;"> <div style="width: 20px; height: 20px; background-color: white; border: 1px solid black; margin-right: 5px;"></div> White </div> <div style="display: flex; align-items: center; margin-bottom: 5px;"> <div style="width: 20px; height: 20px; background-color: #4b4b4b; border: 1px solid black; margin-right: 5px;"></div> Earth-tone Brown </div>

Not recommended for porch enclosures. Refer to GOLD Series.

BRONZE SERIES our good window

You'll find more standard features with a Larson Bronze Series storm window than other storm windows on the market today.



Our Bronze Series Window

Woolpile weatherstripping	Adds thermal barrier and protects against air infiltration
Bottom expander	Perfect fit for uneven sills
Notched masterframe window	Sashes remove for easy cleaning

Available Models	Color Selection
<ul style="list-style-type: none"> Two-Track Double Hung L201 Three-Track Double Hung L301 Storm Picture Window L501 	<div style="display: flex; align-items: center; margin-bottom: 5px;"> <div style="width: 20px; height: 20px; background-color: white; border: 1px solid black; margin-right: 5px;"></div> White </div> <div style="display: flex; align-items: center; margin-bottom: 5px;"> <div style="width: 20px; height: 20px; background-color: #4b4b4b; border: 1px solid black; margin-right: 5px;"></div> Earth-tone Brown </div> <div style="display: flex; align-items: center;"> <div style="width: 20px; height: 20px; background-color: #cccccc; border: 1px solid black; margin-right: 5px;"></div> Mill finish </div>

Not recommended for porch enclosures. Refer to GOLD Series.





EXTERIOR Energy Solutions for your windows

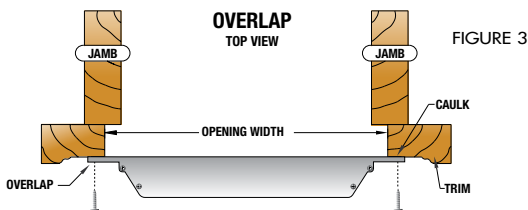
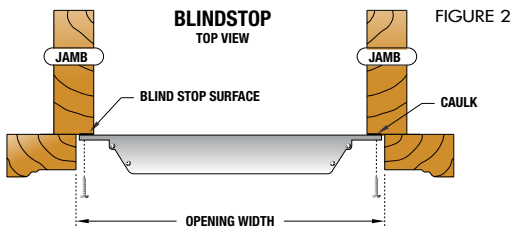
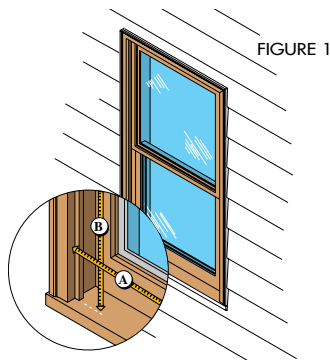
Measuring Exterior Storm Windows

Storm window sizes are determined by measuring your existing window opening as shown in Figure 1. Record opening width A first and opening height B second. Round down to the nearest 1/8".

Larson windows can be installed Blindstop (Figure 2: inside mount) or Overlap (Figure 3: outside mount), or you can have the windows made to the exact tip-to-tip measurement desired.

Record Width A

Record Height B



Ordering Exterior Storm Windows

Exact Tip-to-Tip

Tell us what you want your storm window to measure tip-to-tip with or without the expander, and we will manufacture your window to your specifications.

Blind Stop Installation "inside mount"

Measure your existing window opening listing width first and height second. Larson automatically downsizes your window to ensure the proper clearance and fit.

BLIND STOP



Overlap Installation "outside mount"

Measure your existing window opening listing width first and height second. Larson automatically adds 1" to your width and 3/4" to your height allowing an overlap for a proper fit.

OVERLAP



Flush Mount Installation Gold Series Windows

The Flush Mount Window features an expander that goes all the way around the window. In addition to great benefits of the GOLD Series storm windows, the flush mount brings the outside surface of the storm window flush with the prime window casing. Measure existing window opening and record width first and height second. Larson will automatically make necessary unit size adjustments from opening measurements.

FLUSH MOUNT



Cottage Style (select models)

Cottage style windows allow the meeting rail to align with the prime window meeting rail. Take a third measurement from the top of window opening to center of prime window meeting rail. Call our Homeowner Helpline for more information.

More Ideas to Make Your Home Energy Efficient



Side-Lite Storm Panels

- Installs over existing sidelights
- Tempered glass
- Screw cap covers available (1705)
- Overlap and inside mount options
- Colors available to match your door



Patio Storm Doors

- Installs over existing sliding patio doors
- Reduces winter heat loss and summer heat build-up
- Wrap around marine glazing
- Double weatherstripping
- White or Earth-tone brown
- Standard and custom sizes

Homeowner Helpline: 1-888-483-3768

www.larsondoors.com

stormwindowssavemoney.com



* Results based on independent lab testing of Low-E window when applied over wood double-hung single glazed window. Actual energy savings may vary.

Larson Manufacturing Company, Brookings, South Dakota, USA.

Larson Manufacturing reserves the right to alter or discontinue any model specification or price without notice. Window colors shown are approximate; actual color may vary.

0951280 4/09